

Transaction Information

Tool ID	ASTEP-36
Tool Status	Connected
Location	Woodlands, Singapore
Wafer Size	200 mm
Fab Section	Lithography
Tool Available Date	2024-10-15

General Product Information

Vendor Supplier	ASML
Model	5500 / 275D
Vintage	1998
Serial No	6768
Asset Description	AUTOMATIC WAFER STEPPED
Software Version	8.8.6.c
CIM	SECS
Process	ILINE STEPPER

Hardware Configuration (Fab)

System Type	Description	Quantity	Status
Main System	MAIN BODY	1	OK
Handler System	Wafer Transfer Unit	1	OK
Factory Interface	NONE		
Options System	ELECTRONIC CABINET	1	OK
Others	Operator Console Unit	1	

Hardware Configuration (Subfab / Auxilliary Units)

Description	Quantity	Status
C&T CABINET	1	OK
POWER TRANSFORMER	1	OK
ADVANCE ALIGNMENT SYSTEM	1	OK

Missing/Faulty Parts / Accesories List

Description	Quantity

Tool Pictures

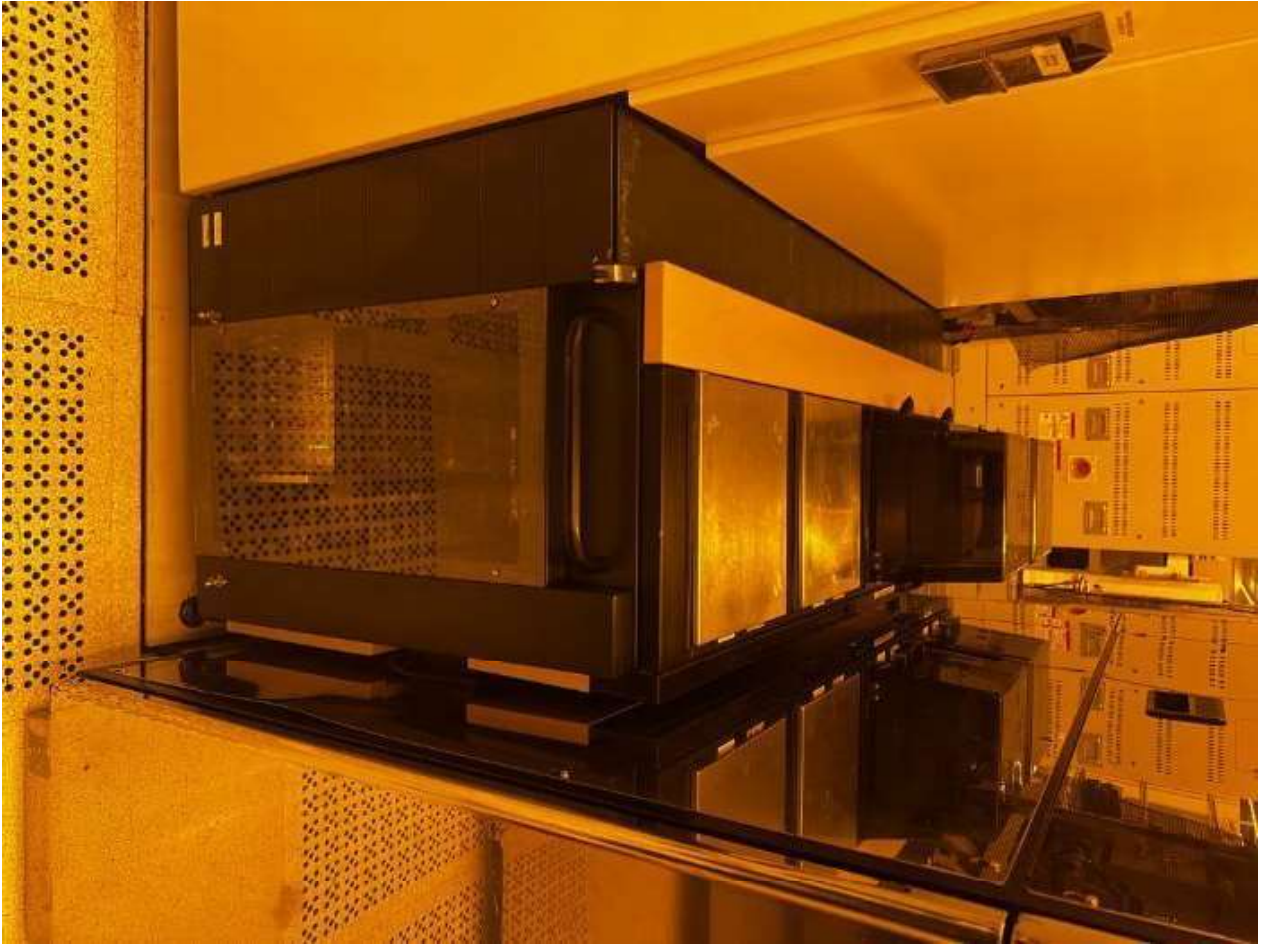
General

MAINBODY , OCU



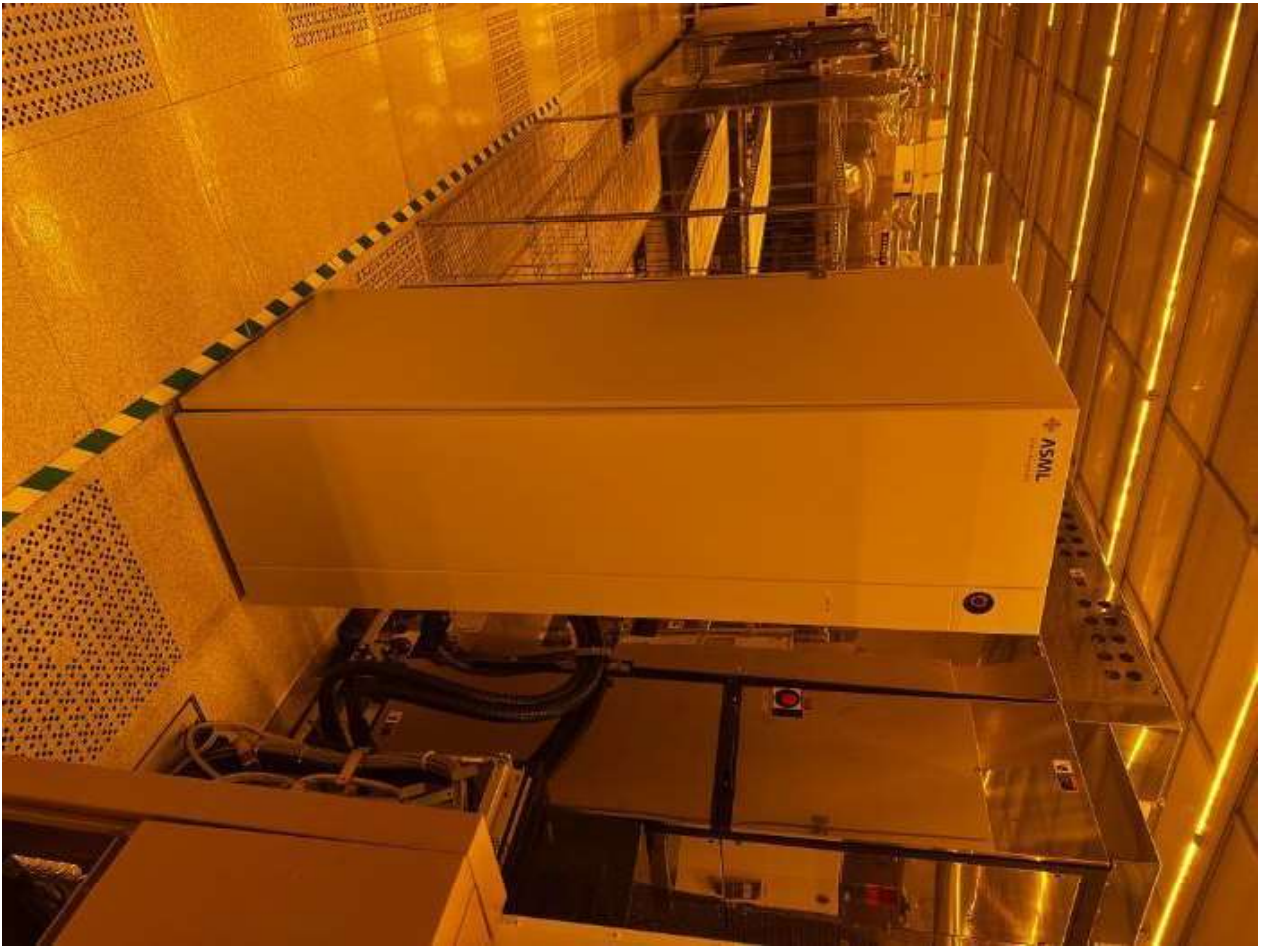
Hardware Fab

ELECTRONIC CABINET , WTS



Hardware Fab

ELECTRONIC CABINET , WTS



Hardware Sub-fab

C&T , TRANSFORMER , ADVANCE
ALIGNMENT



Hardware Sub-fab

C&T , TRANSFORMER , ADVANCE
ALIGNMENT



Manufacture Serial

SERIAL # PLATE



DE RUN 1110
5503 LA VELDHOVEN
THE NETHERLANDS

MACHINE TYPE : PAS 5500 /275 D

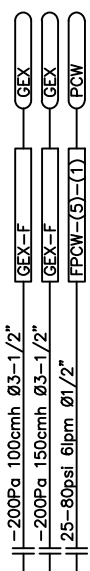
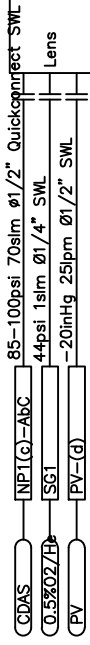
NC. : 9428.999.60620-URS

SERIAL NUMBER : 6768

MANUFACTURED : 10-05

Additional Tool Data Files

ELECT/GAS/PCW/PW/PV/EXH/BASE



Aerial Bottom Module
Illumination
Aerial Bottom Module

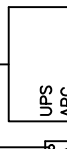
I-LINE STEPPER
ASML PAS 5500/275D
ASTEP-36

2104mm(W) x 2337mm(D) x 2770mm(H) - 5390KG

400V 3P 35A 5wires

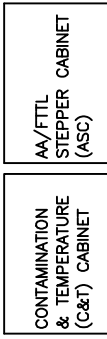
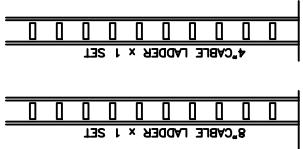
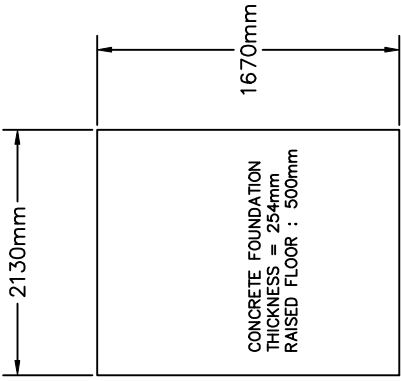


400V 3P 43A 5wires



Bypass

208V 3P 63A 5wires



60psi 0.2lpm Ø1/2"
10-80psi 5lpm Ø1/2" BSP
-200Pa 100cmh Ø6"



-200Pa 250cmh Ø6"



LEGEND:

- BY EQ-VENDOR
- PROVIDED BY HU.
- INTERCONNECT PROVIDED BY HU.
- PROVIDE BY EQ-VENDOR INSTALL BY HU.
- SCOPE BY EQ-VENDOR.



TITLE :	CLEANROOM Module : LI
ASML	PAS 5500/275D
ASTEP-36	I-line Stepper
SHT 1 of 1	REV3
DATE 7 Jul 04	DRAWN HOOKUP

VERIFIED BY :	Joginath Jakka
NAME	3 Feb 06
DATE	
SIGN	

VERIFIED BY :	Joginath Jakka
NAME	3 Feb 06
DATE	
SIGN	

TITLE :	CLEANROOM Module : LI
ASML	PAS 5500/275D
ASTEP-36	I-line Stepper
SHT 1 of 1	REV3
DATE 7 Jul 04	DRAWN HOOKUP

SUB-FAB

FAB