

## Transaction Information

Tool ID	93A79X
Tool Status	Connected
Location	Burlington, USA
Wafer Size	200 mm
Fab Section	Etch
Tool Available Date	2025-01-16

## General Product Information

Vendor Supplier	Applied Materials
Model	Centura Etch, IPS
Vintage	1998
Serial No	9804
Asset Description	AMAT Centura IPS Etch Tool
Software Version	E4.8_26
CIM	SECS
Process	MC/CA

## Hardware Configuration (Fab)

System Type	Description	Quantity	Status
Main System	Centura Etch (IPS) Mainframe (without chambers)	1	
Handler System	HP Robot	1	OK
Factory Interface	Open Cassette	2	OK
Main System	VME Controller/PDU	1	OK
Main System	Seriplex Gas Panel	1	OK
Options System			OK
Handler System	Tilt-out Cassettes	2	OK
Handler System	Wafer Orienters	2	OK
Others			

## Hardware Configuration (Subfab / Auxilliary Units)

Description	Quantity	Status
Generator Racks	2	OK
Heat Exchanger/ Chiller	1	OK

## Missing/Faulty Parts / Accesories List

Description	Quantity
IPS Chambers - REMOVED	2
Hard Drive	1

# Tool Pictures

General

Misc.



General

Misc.



General

Misc.



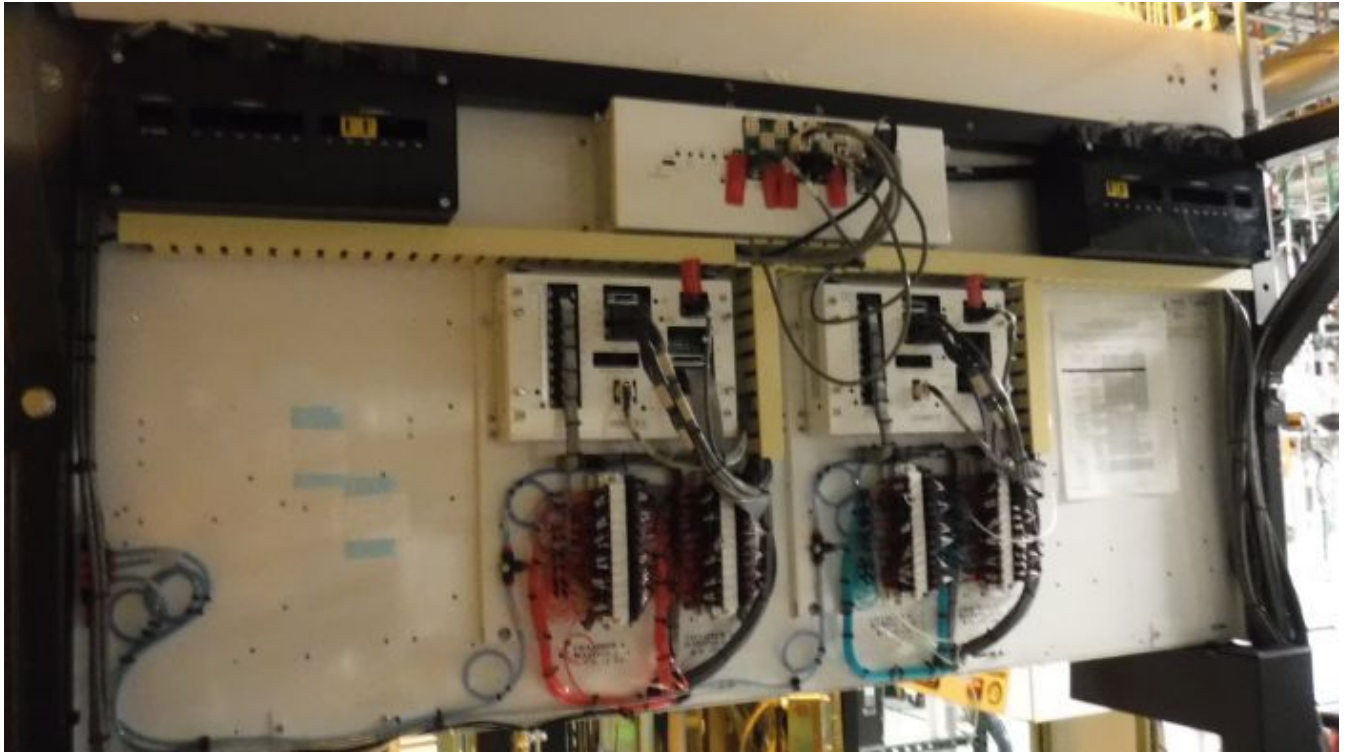
General

Misc.



General

Misc.



General

Misc.





General

Misc.



General

Misc.



General

Misc.



Manufacture Serial

AMAT SN - 9804



# APPLIED MATERIALS

9700 HWY 290 EAST, AUSTIN, TX 78724

OVERCURRENT PROTECTION PROVIDED AT MACHINE  
SUPPLY TERMINALS.

MODEL: CENTURA ETCH

SERIAL NO: 9804

VOLTAGE: 208VAC # WIRES: FOUR PHASE: 3Ø"Δ"

FULL - LOAD CURRENT: 640A FREQUENCY: 50/60Hz

MAXIMUM SYSTEM RATING: 230KVA

AMPERE RATING OF LARGEST LOAD: 100A

INTERRUPTING CURRENT: 10,000 AMPS I.C.

YEAR OF CONSTRUCTION: 1998

DIAGRAM NUMBER: 0180- 76014 (0060-13016 REV. A)



## ▲ DANGER

Arc flash and shock hazard.  
Follow ALL requirements in  
NFPA 70E for safe work.

## Additional Tool Data Files