

Transaction Information

Tool ID	GATOX-04
Tool Status	Connected
Location	Woodlands, Singapore
Wafer Size	200 mm
Fab Section	Diffusion
Tool Available Date	2024-10-02

General Product Information

Vendor Supplier	Tokyo Electron Limited
Model	ALPHA-808S
Vintage	1996.5
Serial No	300009665205
Asset Description	GATOX-04
Software Version	V07.03 R0001
CIM	SECS
Process	Gate Oxidation

Hardware Configuration (Fab)

System Type	Description	Quantity	Status
Main System	Main System		OK
Handler System	Wafer Transfer System Robot	1	OK
Factory Interface	SMIF	1	OK
Others			
Options System			

Hardware Configuration (Subfab / Auxilliary Units)

Description	Quantity	Status
NA		

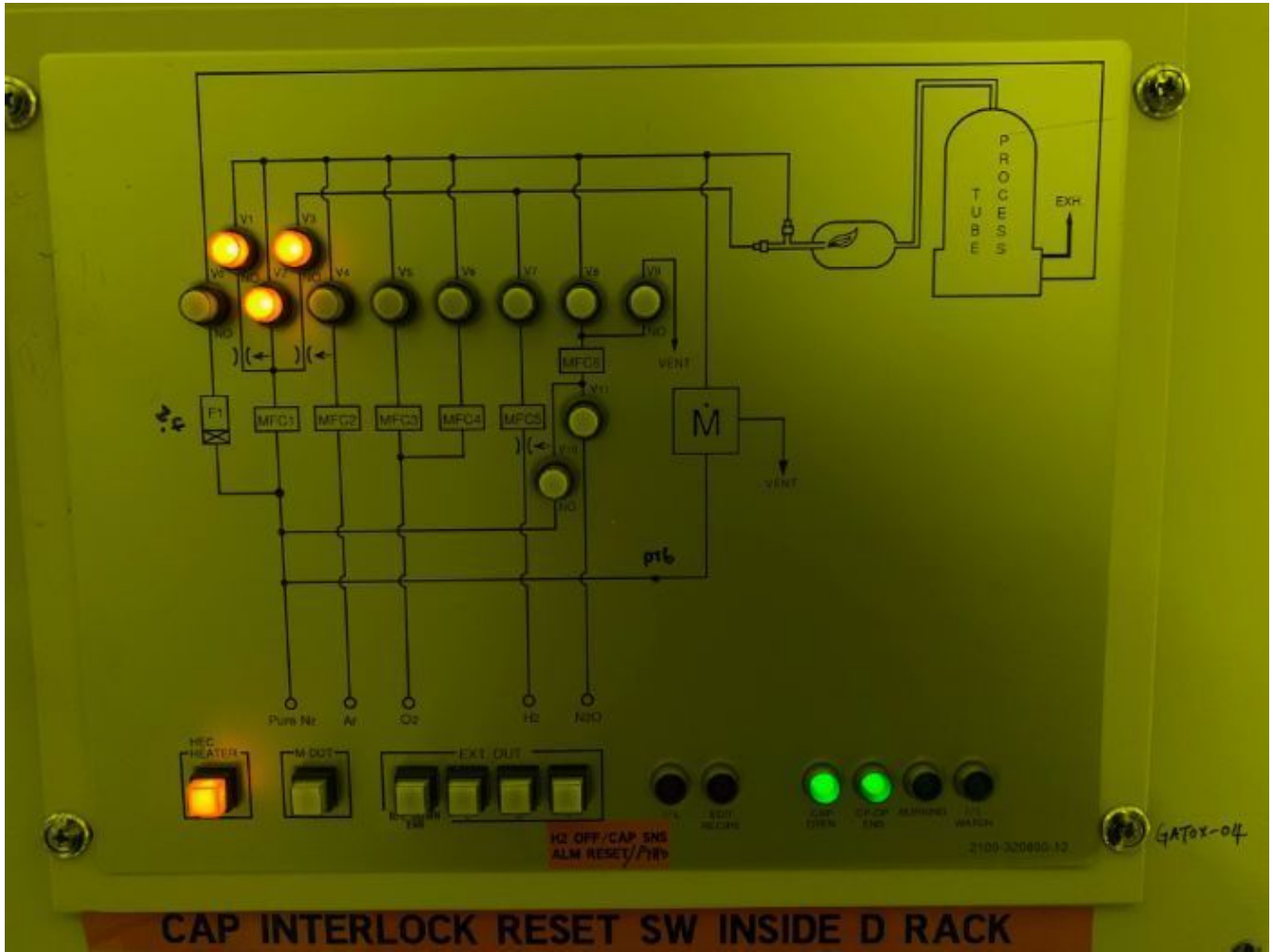
Missing/Faulty Parts / Accesories List

Description	Quantity
Note: Quartzware is NOT included.	

Tool Pictures

General

GATOX-04



PLEASE START THE T-BAWL
AFTER CHECKING A/S POSITION.

111043688911

GATOX-04 HIA21

S4000Z

GATOX-04

STATUS

DISPLAY OFF	READ MAIL	ALARM	POWER FAIL	STANDBY	ALARM LOG	TEMP	GAS	WHOLE
-------------	-----------	-------	------------	---------	-----------	------	-----	-------

Ver/Rev INFORMATION

	Ver	Rev
CPU-M	U07.03	R0001
CPU-P	U07.03	R0004
CPU-T	U07.00	R0027
CPU-S	U46.01	R1014
CPU-I/O(P)	U01.19	RP21563-0
CPU-I/O(T)	U07.01	R0003

TOKYO ELECTRON CORPORATION LIMITED
ALL RIGHTS RESERVED. (C) 1991

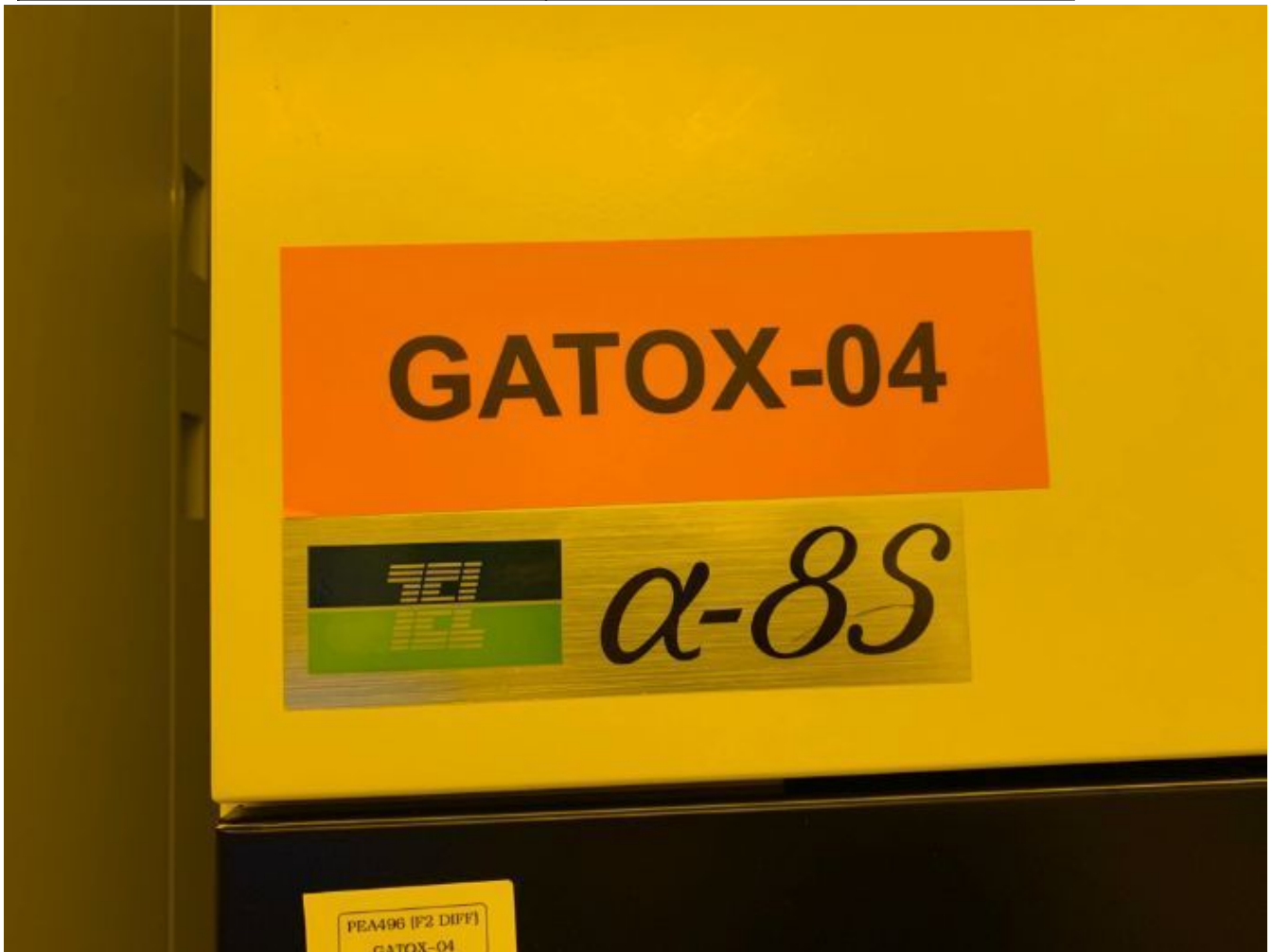
WRITE MAIL	EDIT PROFILE	SET	DISPLAY	EDIT	SET INTIAL	SET CLOCK	SET VDATA	ESC
------------	--------------	-----	---------	------	------------	-----------	-----------	-----

RECIP

SET BAKING

T-BAWL

SHIFT







Manufacture Serial

Machine Serial Number

TYPE	ALPHA-808S	
SERIAL NO.	309009665205	
POWER AC	208 V	35.6 KVA
MAXIMUM FULL-LOAD CURRENT	98.8 A	
PHASE	3	TYPE OF DISTRIBUTION 3 WIRE
AIC	50 KA	
FREQUENCY	50/60 Hz	
HEATER	VMM-40-101	29.1 KVA
ELECTRICAL DIAGRAM NO.	2193-M24823	
OVERCURRENT PROTECTION PROVIDED AT MACHINE SUPPLY TERMINALS		
DATE OF MANUFACTURE	1996.5	
TOKYO ELECTRON LIMITED		

GATOK-04

MAIN POWER
AC 208V

Additional Tool Data Files