

## Transaction Information

Tool ID	TRK423
Tool Status	Running Wafers
Location	Dresden, Germany
Wafer Size	300 mm
Fab Section	Lithography
Tool Available Date	2025-02-01

## General Product Information

Vendor Supplier	TEL
Model	LITHIUS
Vintage	2006
Serial No	MDG360846
Asset Description	2-Block-Machine
Software Version	300.0.130.2
CIM	SECS
Process	Coat, Development

## Hardware Configuration (Fab)

System Type	Description	Quantity	Status
Main System	Lithius 2-Block	1	OK
Handler System	TEL robot (CRA/PRA_3x/IRAM/IRAS)		OK
Factory Interface	FOUP	5	OK
Options System			
Others			

## Hardware Configuration (Subfab / Auxilliary Units)

Description	Quantity	Status
Developer Cabinet	1	OK
Coater Cabinet	1	OK
Resist Cabinet	1	OK
Temp./ Hum.Controller	2	OK
PowerBox	1	OK

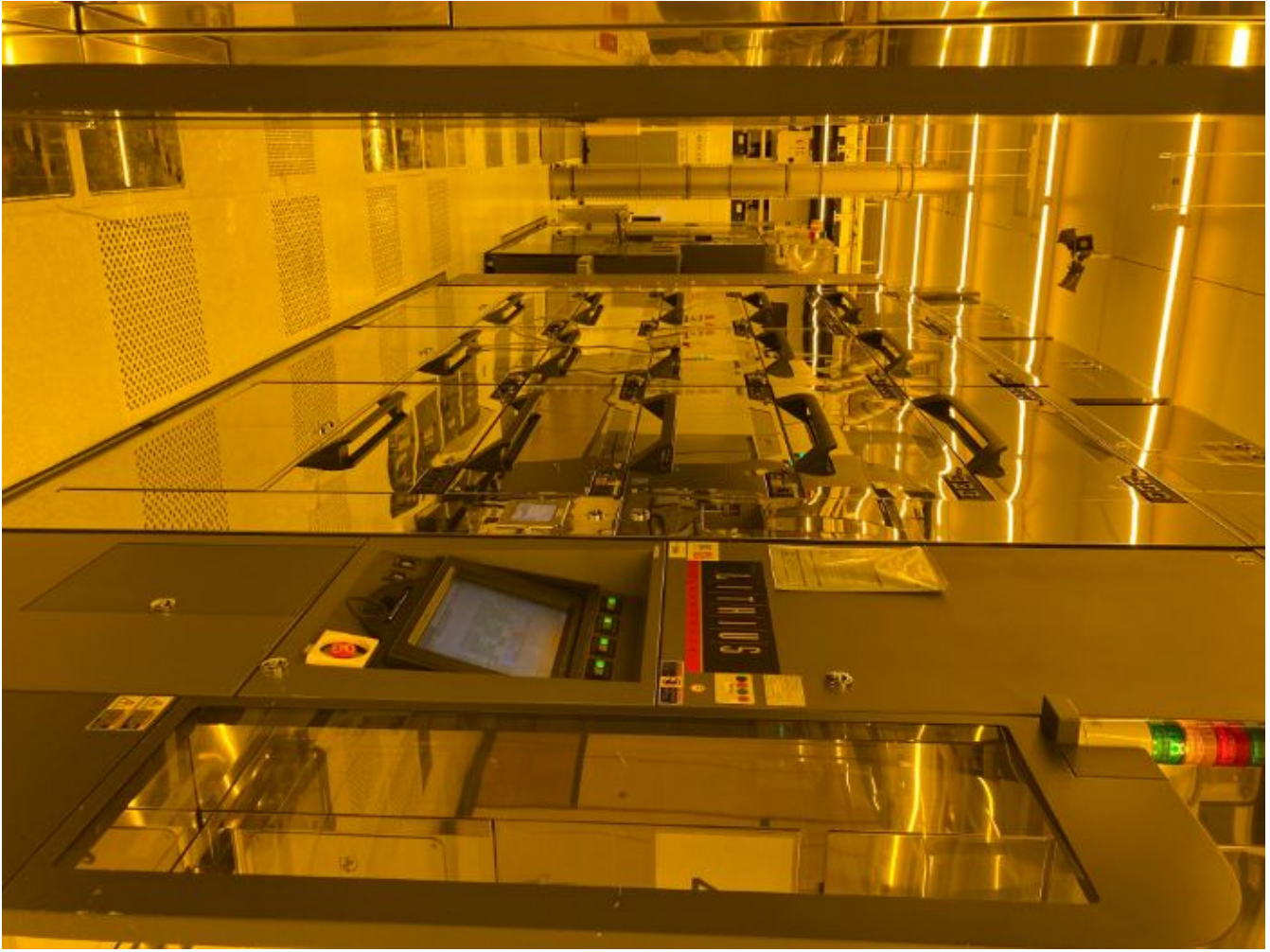
## Missing/Faulty Parts / Accesories List

Description	Quantity
NONE	

# Tool Pictures

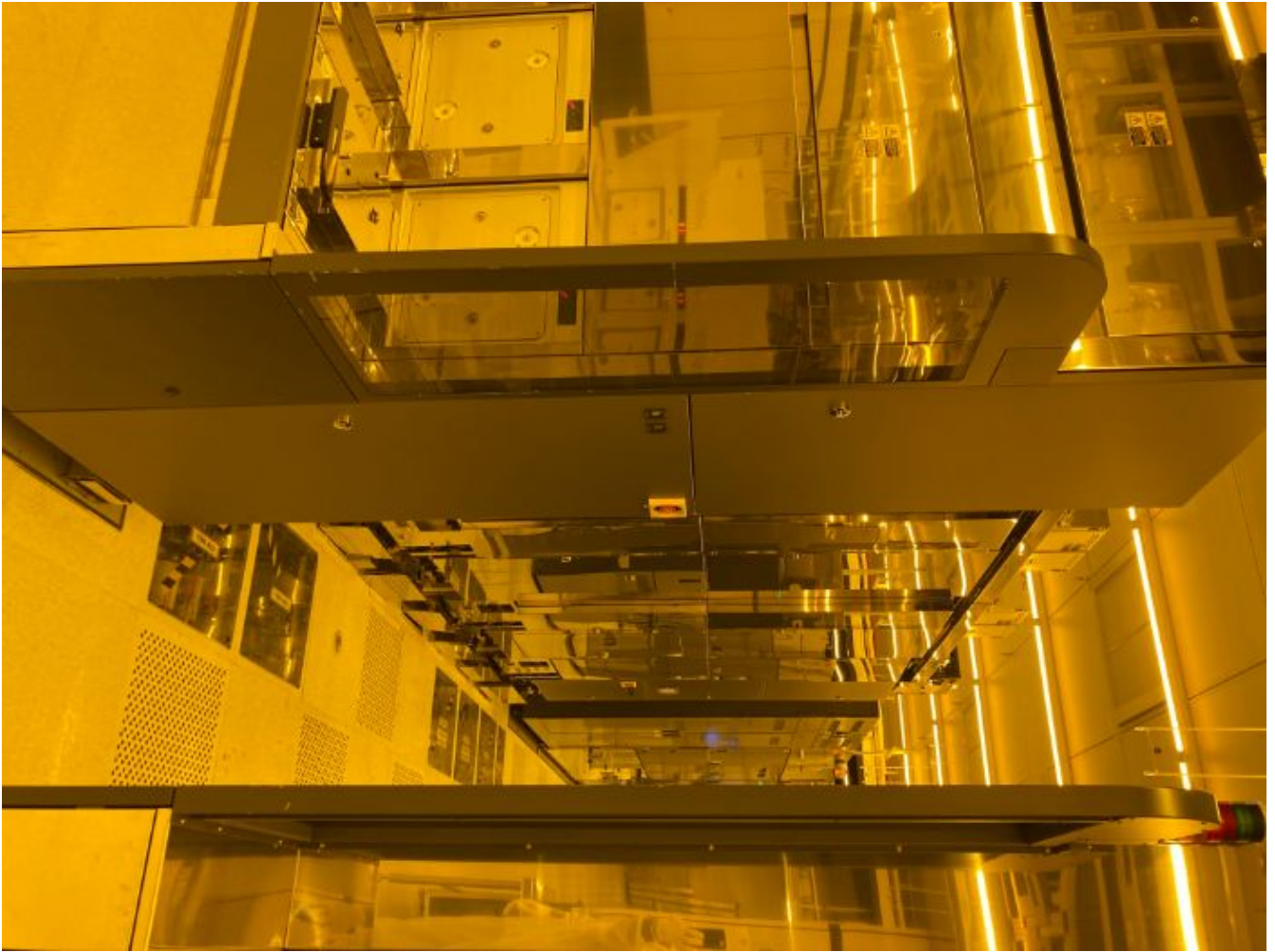
General

Track\_mainlevel



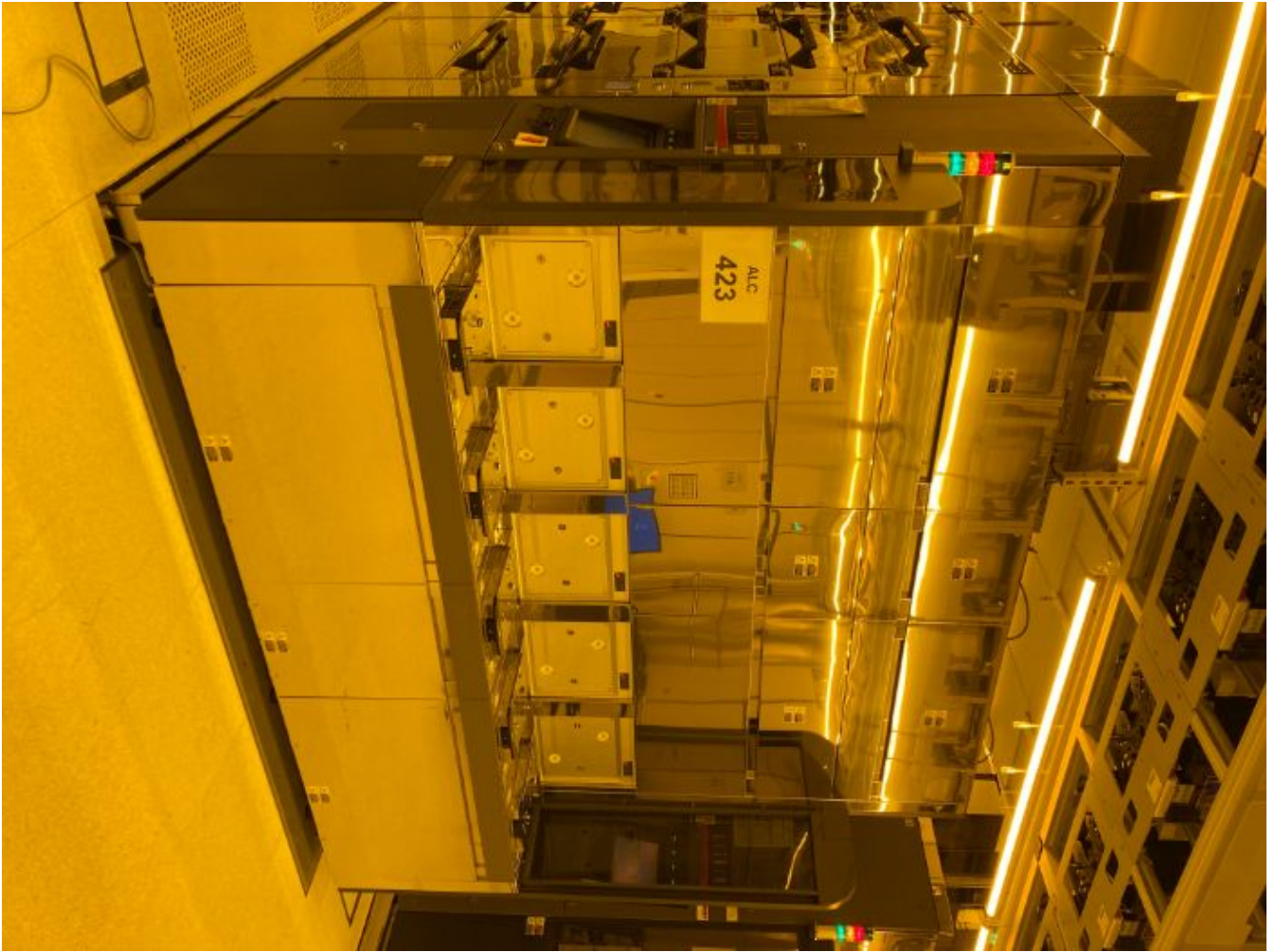
General

Track\_mainlevel



General

Track\_mainlevel

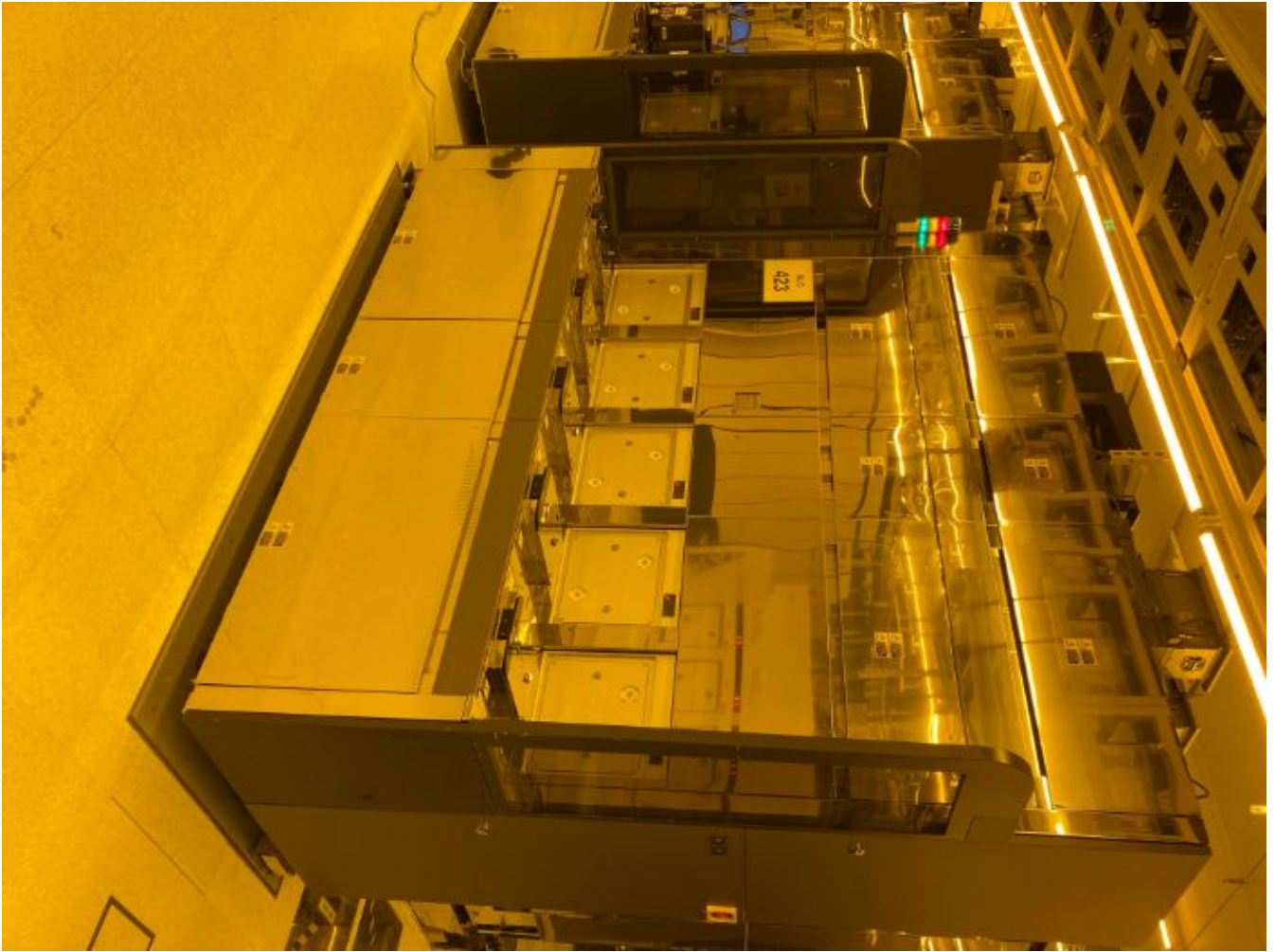






General

Track\_mainlevel







Hardware Sub-fab

HW\_sublevel

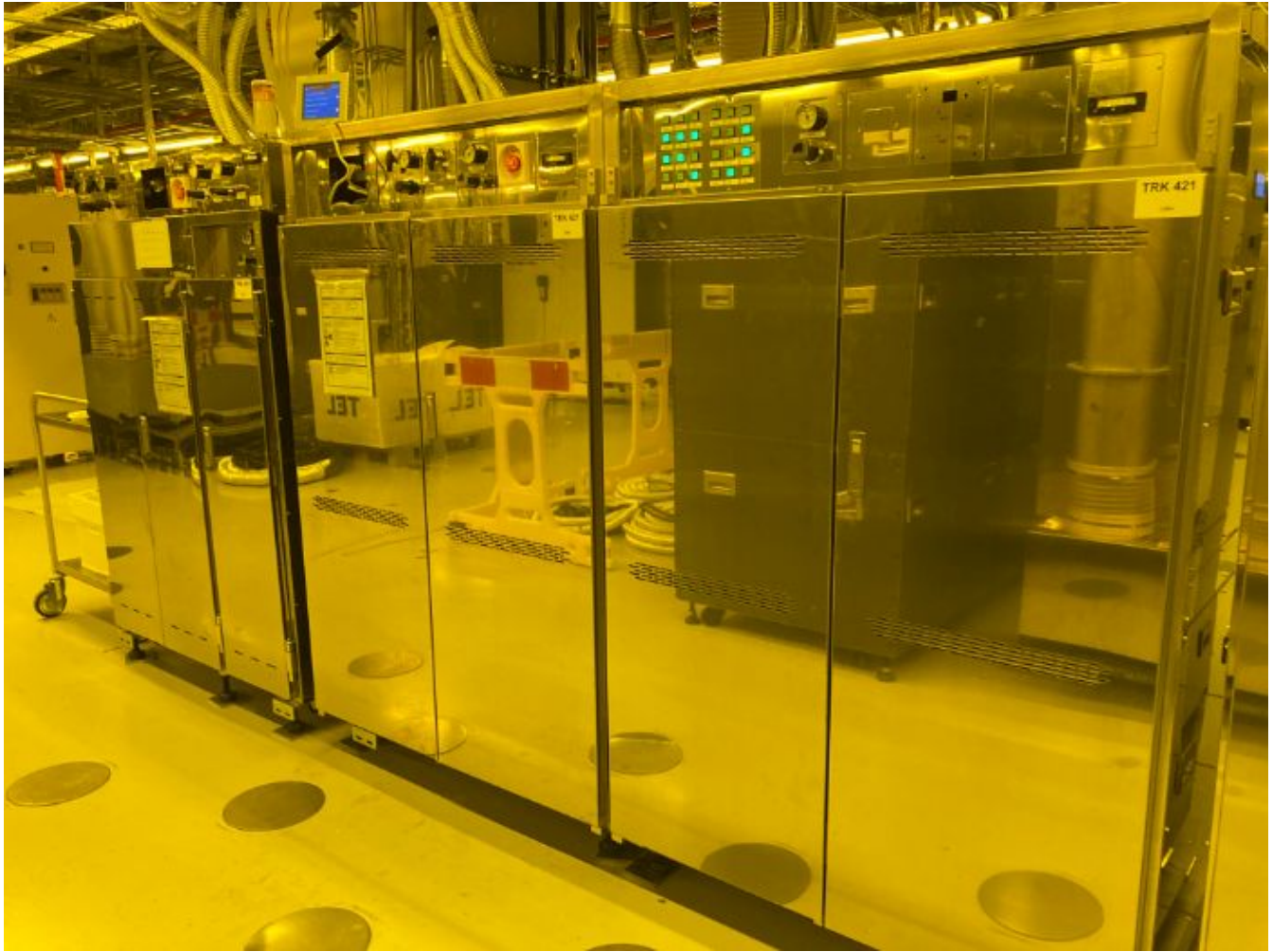




Hardware Sub-fab

HW\_sublevel









Manufacture Serial

number\_plate

# CLEAN TRACK



TOKYO ELECTRON KYUSHU LIMITED

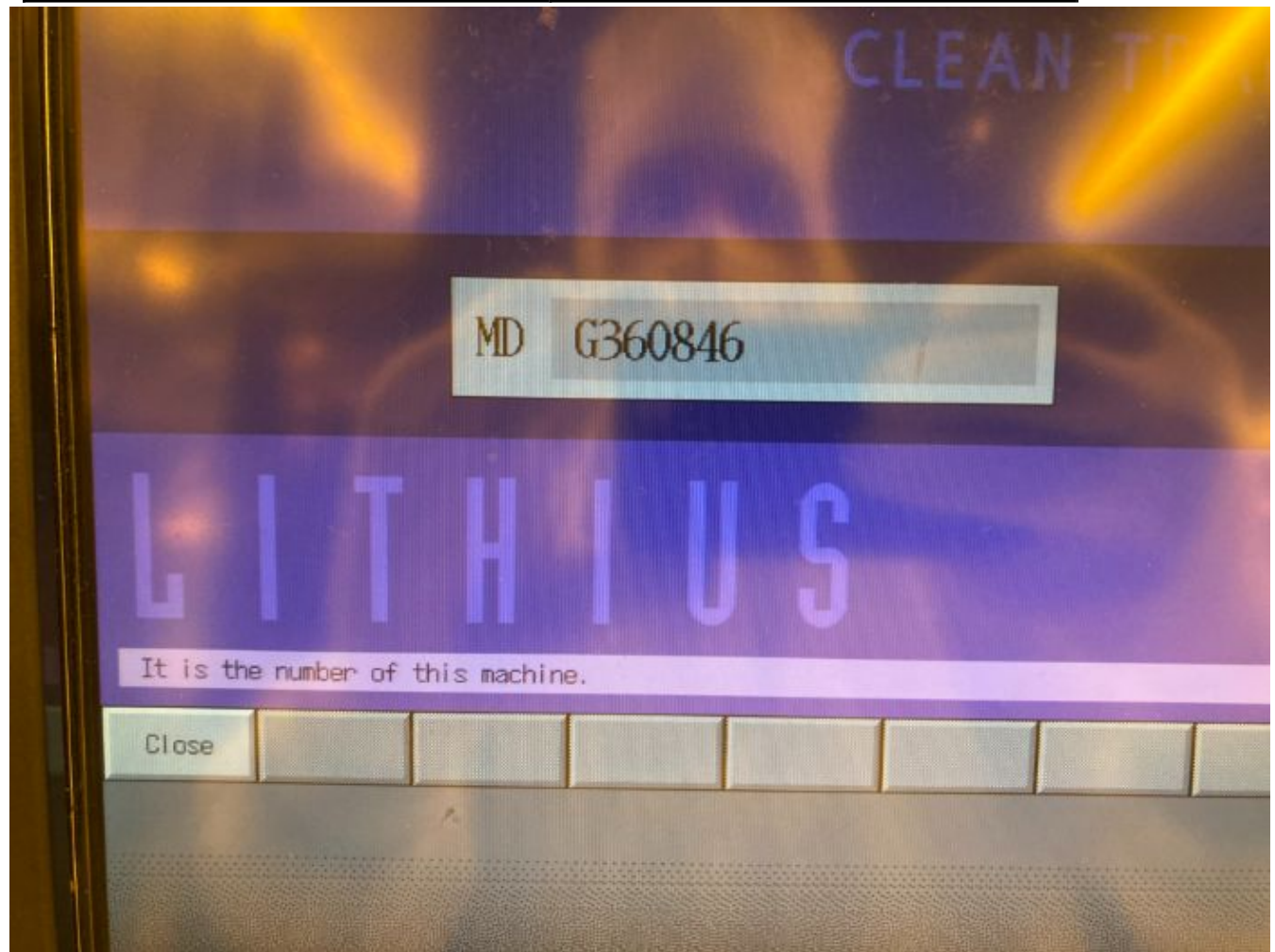
MACHINE NO. G360846 DATE 06/12

ADDRESS: 1-1 FUKUHARA KOSHI-MACHI  
KIKUCHI-GUN KUMAMOTO 861-1116. JAPAN

Made in Japan

Manufacture Serial

number\_plate



## Additional Tool Data Files